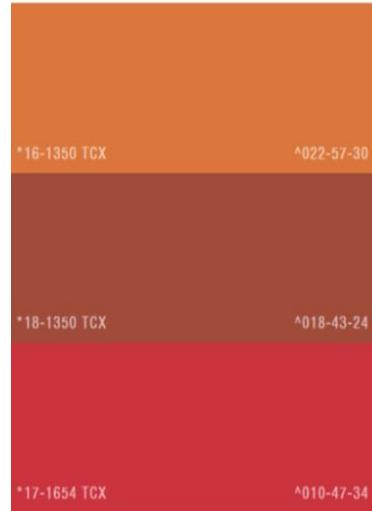
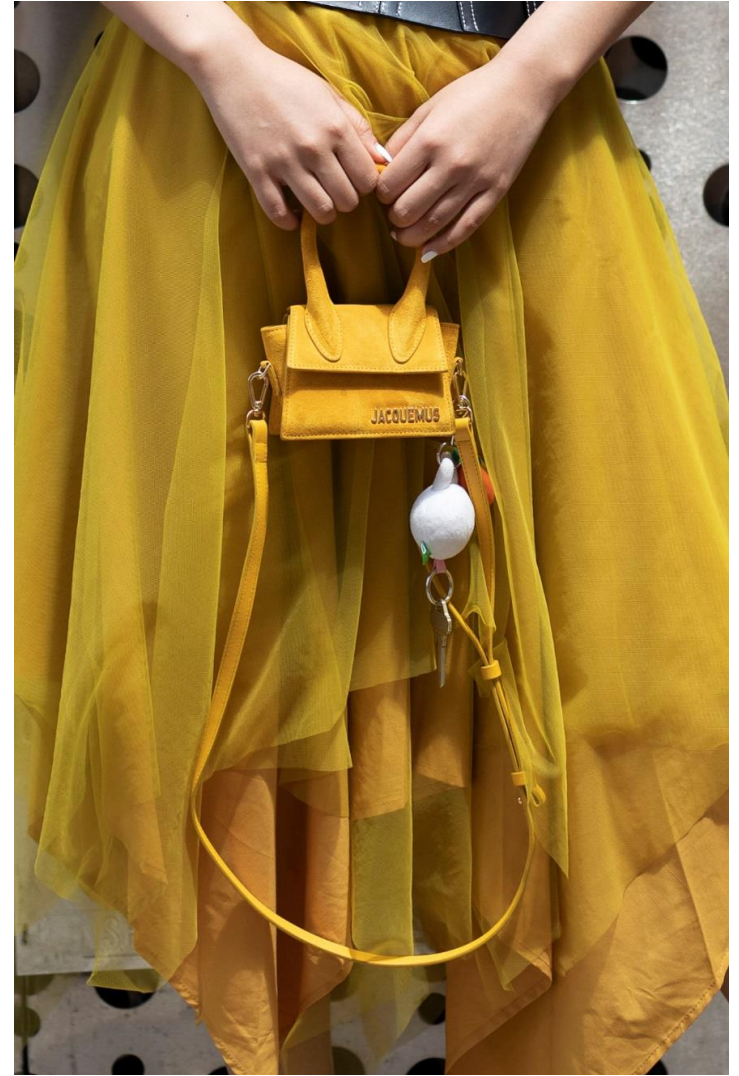


winter white tones take on a more lived-in grey cast.

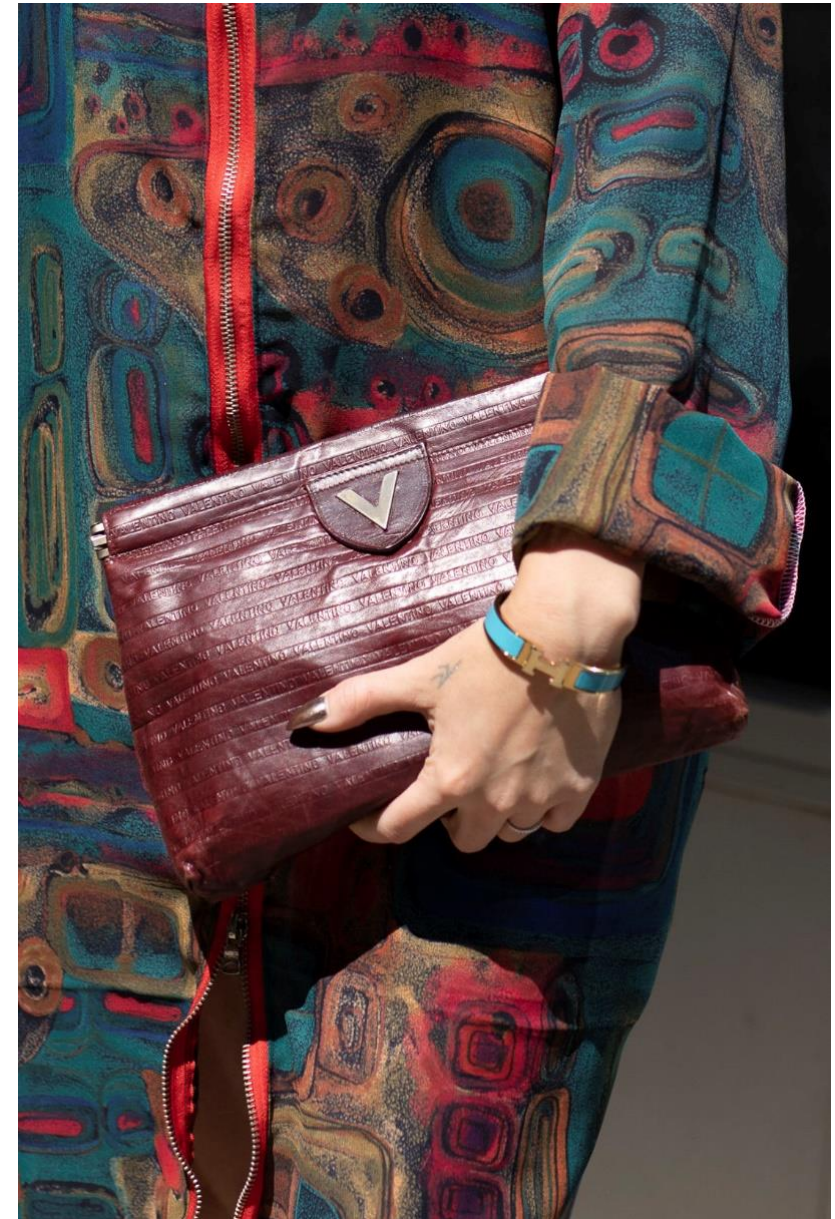
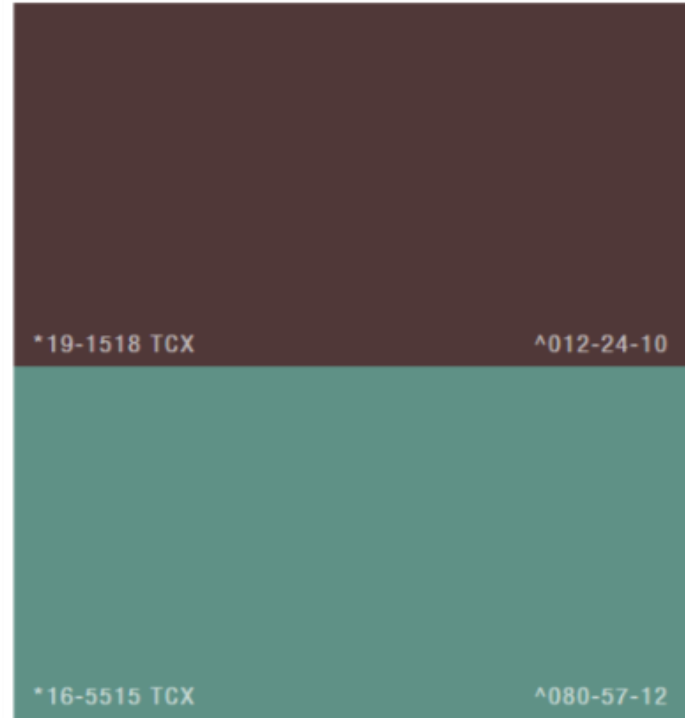


Retro Apricot and Pumpkin Latte evolve the look of brown tones for fashion. these two warm tones, punchy Cherry Pop adds new vibrancy to red A/W 19/20 accessories and footwear



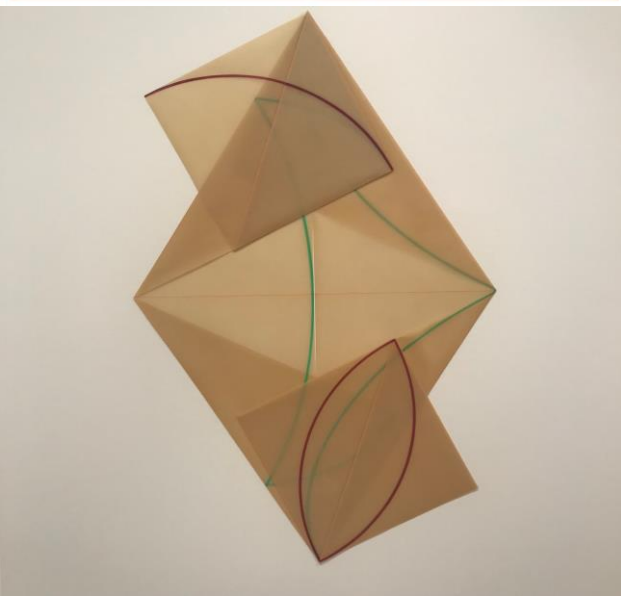
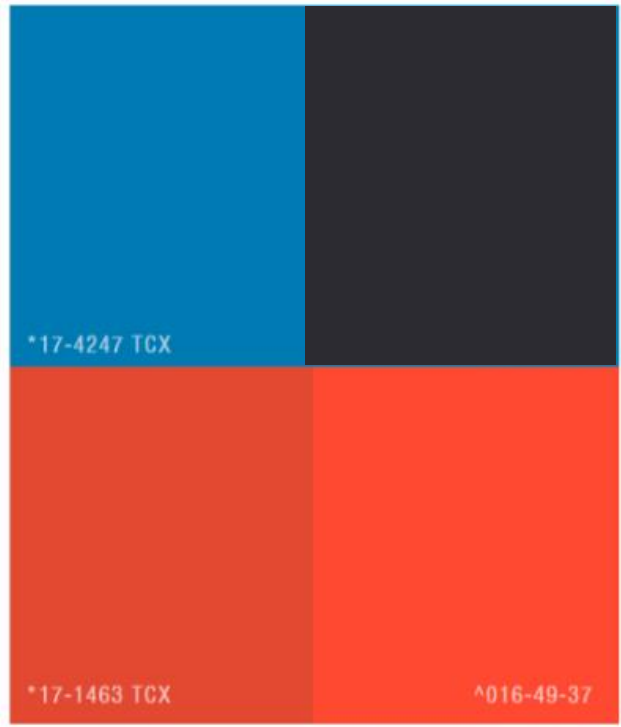


yellow should be considered for accent



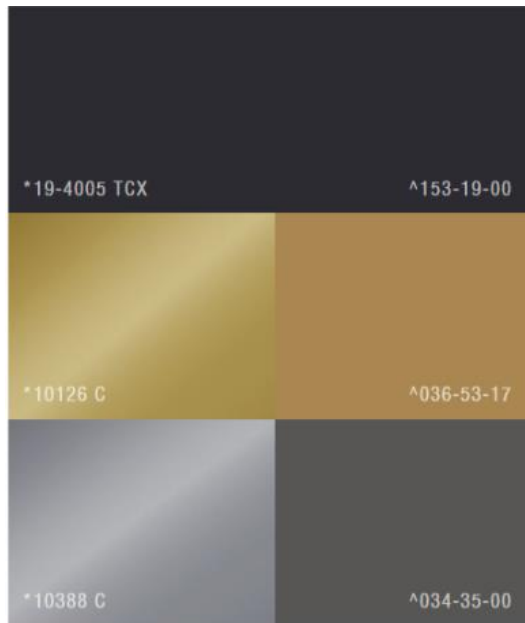
[Aquatic Blues](#) take a muted turn and importance of brown tones, elegant Reddened Brown offers something new for A/W 19/20



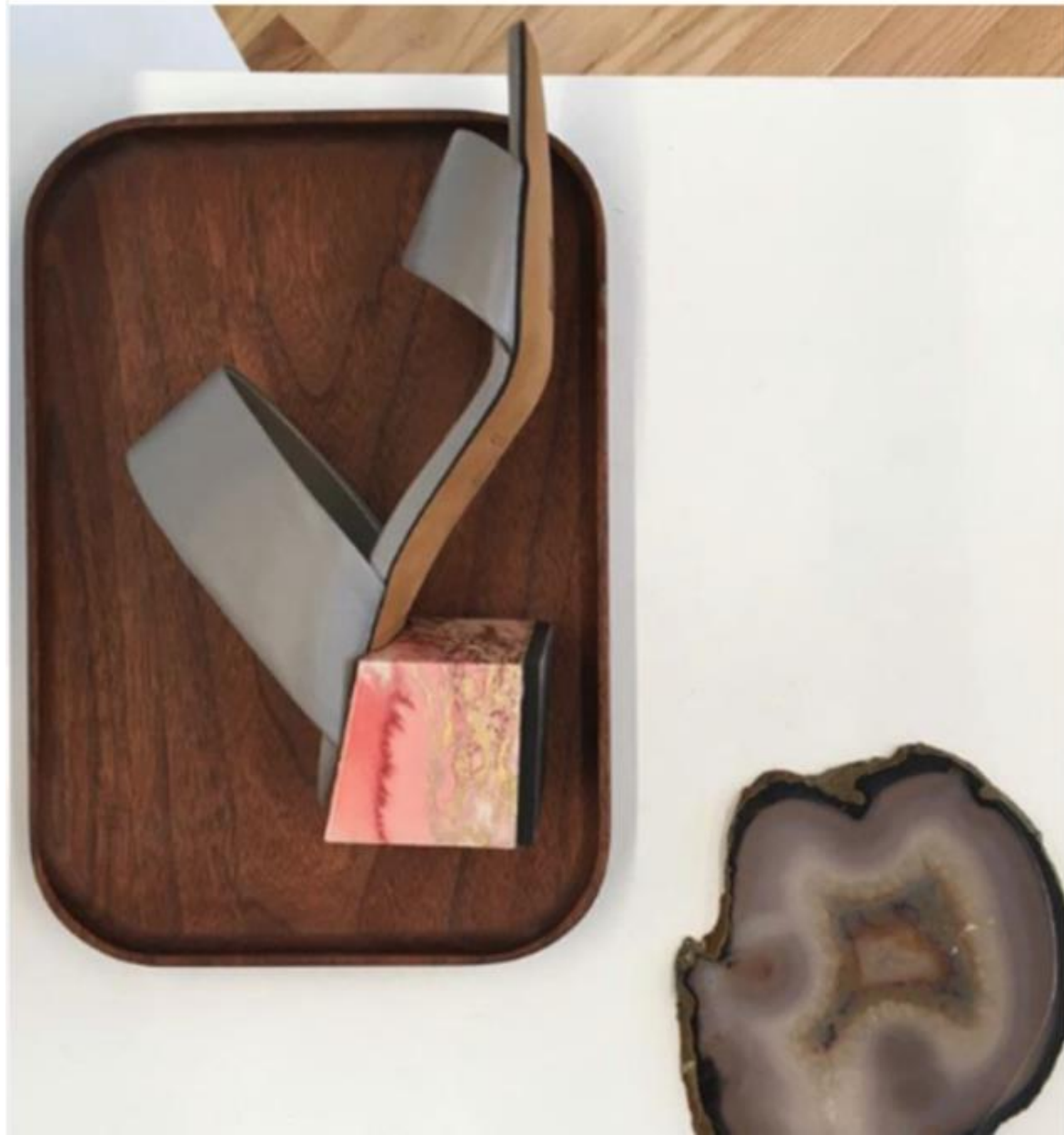


Contrasting the rich, sophisticated core and fashion colours, the use of both Flame and Fluid Blue



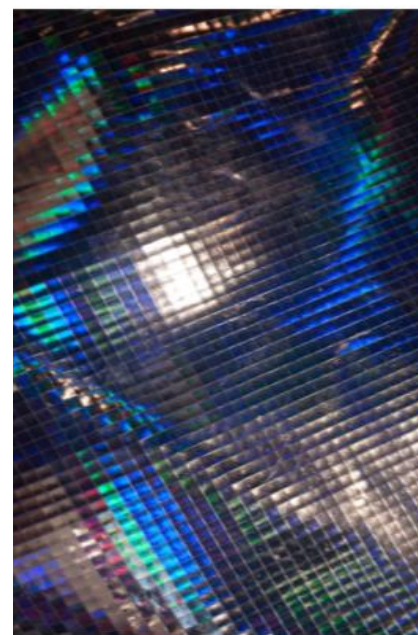
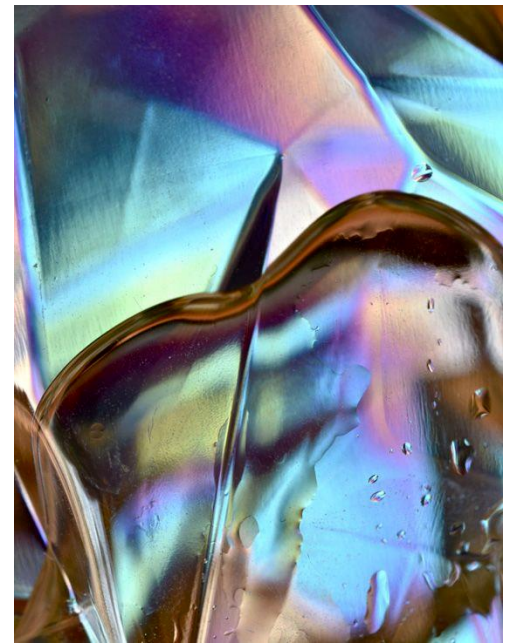
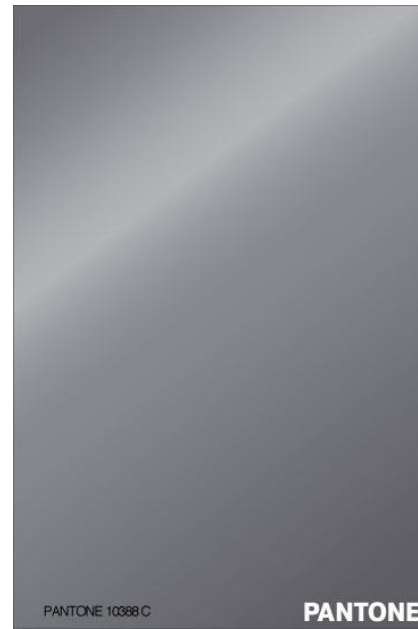
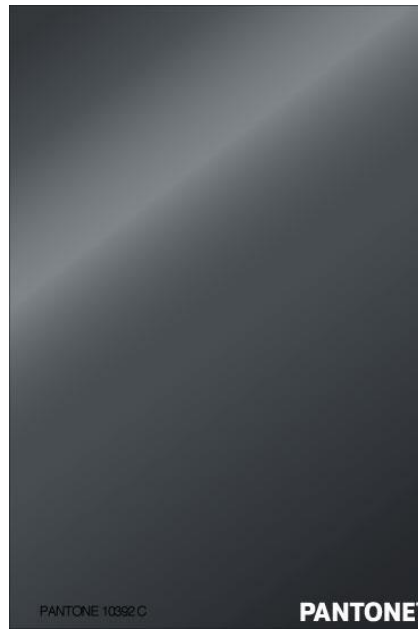


The reinvestment in Black, Yellow Gold and True Silver as core colours. Use black as a key colour statement on volume leather pieces and footwear across markets.



popular pastel tones with earthy Himalayan Salt. Visceral Carnelian Red offers a new take on antique red tones while the lush appeal of Living Green

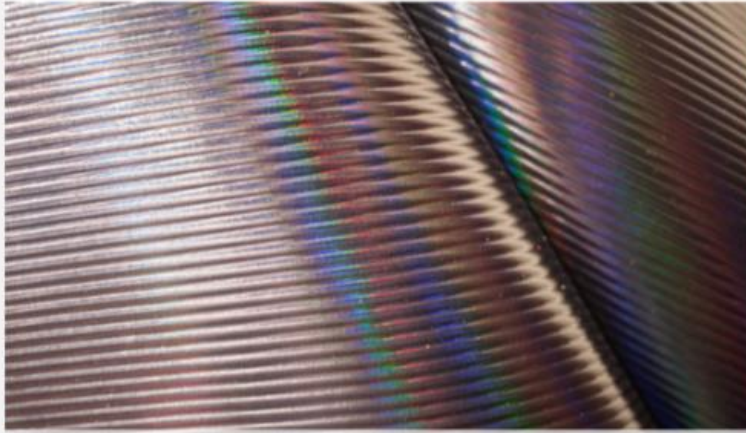




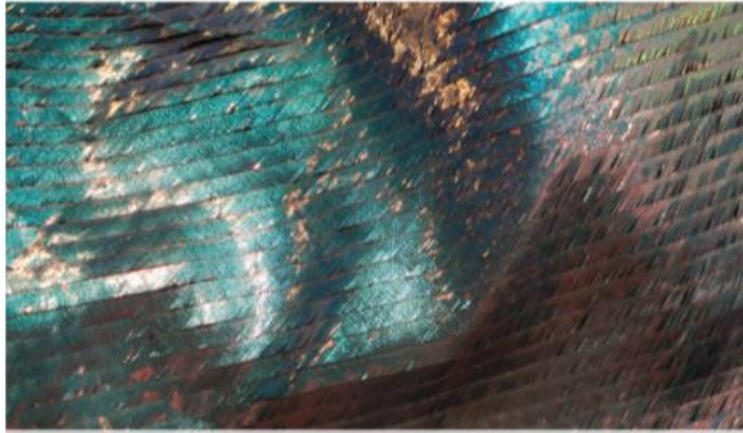
technical fabrics are seen adding an unexpected futuristic feel to clean utility looks



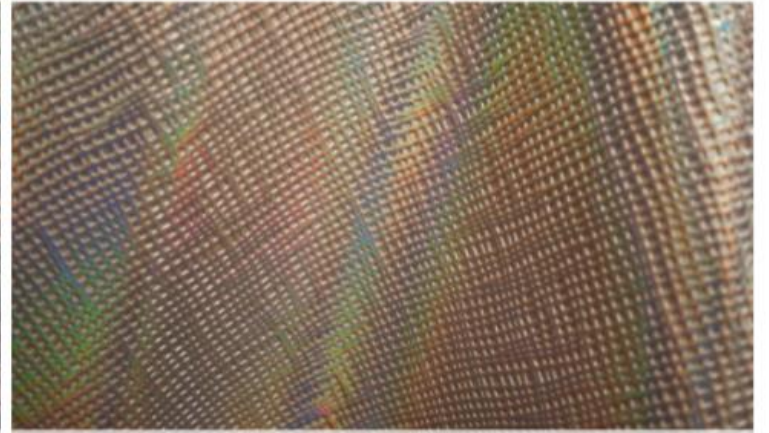
luminous patterns and a sporty, futuristic style. holographic in pastel tints with a focus on Rosewater Pink and Cosmic Sapphire. Metallic yarns and pearlescent foils pair up with illustrative cosmic prints and voluminous sheers for an otherworldly take on a mix of casual and party items.



Dani Collection



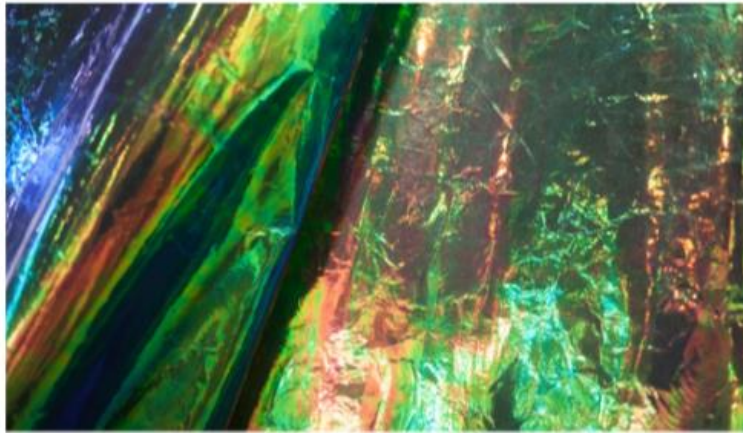
Kotai Tannery



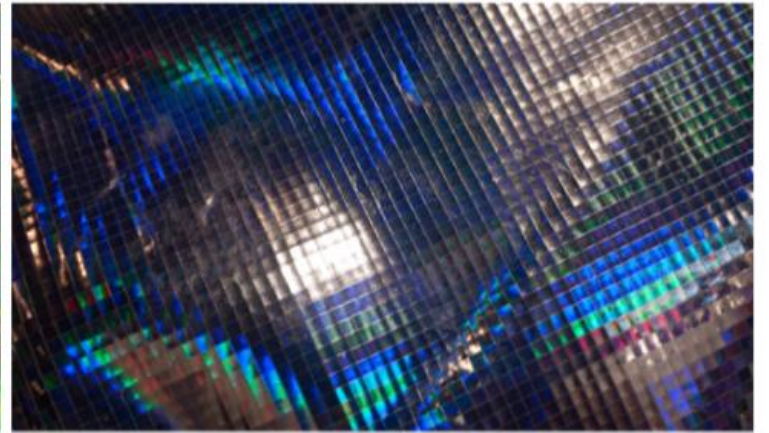
Dani Collection



Fedi Silvano Leather



Fedi Silvano Leather



Kotai Tannery